

Animal Source



PSU Animal Resource Program

Volume 5, Issue 3
Summer 2007

*Visit the ARP
website at
[www.research.psu.
edu/arp](http://www.research.psu.edu/arp)
for answers to your
animal use questions*

Inside this issue:

*Clinical Pathology
Services* 3

*New Look for ARP
Website* 3

*CBL Surgery Suite
Available* 3

*Mouse Biotechnology
Seminar* 4

What you need to know about animal research at Penn State

As a new academic year is about to begin, we want to inform you of some important Penn State Policies on Animal Research. At Penn State, the humane treatment of animals is legally required and a moral commitment. **Here are the top ten things you need to know about animal research at Penn State:**

1. **The Institutional Animal Care and Use Committee (IACUC)** is the authority governing the use of animals for research, teaching or testing at Penn State. The IACUC must review and approve protocols covering these activities, inspect animal facilities at least twice yearly, and respond to any animal welfare concerns.
2. **IACUC approval must be attained prior to the use of any live or dead vertebrate animals in research, teaching or testing.** Examples of activities that are covered include: collecting samples from privately owned or Penn State farm animals, observing, trapping, or collecting samples from wildlife, birds, reptiles, amphibians, or fish, using preserved vertebrates for teaching, and of course all typical research uses.
3. **The Office of Research Protections (ORP)** manages compliance programs and provides support for the compliance committees that ensure research is conducted in accordance with all applicable regulations. This includes [Animal Subjects \(IACUC\)](#), [Human Participants \(IRB\)](#), [Biohazardous Materials \(IBC\)](#) as well as [Radioisotopes \(UIC\)](#). ORP provides training on the responsible conduct of research which includes but is not limited the care and use of animals in research. For more information, call the ORP at 865-1775 or visit the ORP website at <http://www.research.psu.edu/orp/index.asp>
4. **The Animal Resource Program (ARP)** provides veterinary oversight and manages the laboratory animal facilities at the University Park campus. ARP personnel supply routine and emergency veterinary care for laboratory and agricultural animals and wildlife, offer health surveillance and disease prevention services, and coordinate animal purchasing and shipping. See the ARP website: <http://www.research.psu.edu/arp/> or call 865-1495 for more information.

Continued on page 2

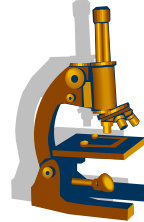
Things to know about animal research, continued from page 1.

5. **Penn State is required to comply with many regulations** including USDA Animal Welfare Act 9 CFR, PHS policy including the “Guide for the Care and Use of Laboratory Animals” and the “Guide for the Care and Use of Agricultural Animals”. These guidelines cover animal husbandry, veterinary care, the use of analgesics and anesthetics for animal surgeries, the transportation of animals, and a variety of other topics. The IACUC is charged with ensuring that all proposed animal activities meet these guidelines. NIH funding is dependent upon Penn State fulfilling the requirements of the PHS policy and following the recommendations of the Guide. Grant money may be suspended or revoked if PSU does not fulfill these requirements.
6. **Reporting animal welfare concerns:** Concerns or questions related to projects involving animals can be directed to the Director of Research Protections (Telephone: (814) 865-1775; Fax: (814) 863-8699; E mail: ORProtections@psu.edu). The matter will be referred to the IACUC and will be handled confidentially. Federal law prohibits the discrimination against persons that bring forth legitimate concerns for investigation.
7. **Monitoring Animals: All animals (laboratory animals, livestock, fish, birds, amphibians etc.) must be observed at least daily.** Food, water, and bedding must be checked as well. There must be a written record that observations have occurred 365 days a year. Make up-to-date weekend, holiday, and emergency contact information readily available stating who should be contacted if there is a problem with your animals
8. **Animals must be kept in approved animal facilities** to ensure proper environment and care. In addition, proper attire must be worn when in animal facilities. Animals may not be held overnight in laboratories or anywhere else without prior approval from the IACUC. Accurate and reliable research results depend on the use of healthy, non-stressed animals so keeping animals appropriately housed in approved animal facilities is important.
9. **Penn State is committed to ensuring that research and teaching projects conducted by its employees are performed in a humane and ethical manner.** To that end, PSU has instituted policy RA15 to ensure that “research involving the use of live animals shall be performed in an ethical manner, designed to minimize pain and distress and comply with applicable federal and state regulations”.
10. **AAALAC Accreditation:** The PSU University Park animal care and use program, including all agricultural animal facilities, are accredited by the Association for the Assessment and Accreditation of Laboratory Animal Care International (AAALAC). AAALAC International accreditation is voluntary and includes extensive review of institutional policies, programs and facilities that must be repeated every three years to maintain accreditation status.



Clinical Pathology Services from ARP

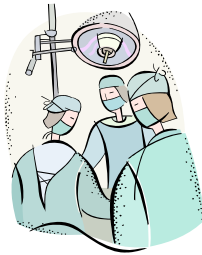
The Animal Resource Program is equipped to run complete blood counts with 5 part differentials for all laboratory and agricultural animals used at Penn State. Likewise, complete or individual serum chemistry values can be run along with electrolyte panels and blood gases. Contact ARP for more detail on how to submit samples.



New Look for the ARP Website

The Animal Resource Program website at www.research.psu.edu/arp has undergone a design change as part of the redesign of the Office of the Vice President for Research website. The content remains essentially the same but new navigation buttons and more extensive menu options make it easier to navigate through the site.

The ARP website provides PSU faculty, staff and students with information and resources relating to the use of animals in research and teaching. Animal users can browse the ARP site for information on a variety of topics, including drug dosages for anesthetic and analgesic medication, importation/exportation of animals, euthanasia methods, and training services provided by ARP.



CBL Surgical Suite Available for Investigator Use

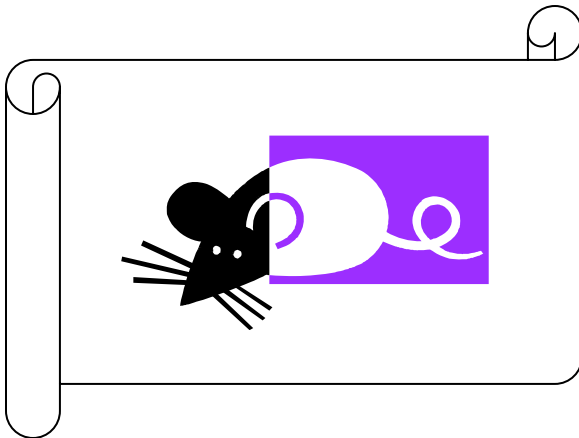
The surgery suite in the Centralized Biological Laboratory is available for use by PSU investigators who require space for surgical procedures on research animals. The facility can accommodate animals up to the size of small ruminants or large swine. The operating room has a waste gas scavenging system, surgery tables and overhead lighting. Inhalation anesthetic machine(s) and monitoring equipment are available for use.

Investigators are not charged for use of the suite but advance reservation is required. A sign up calendar is located outside of the operating room and investigators may sign up for dates and times as they are available. Use of the suite increases during the academic year so sign up at least 1-2 weeks prior to when you need to space.

Animal Resource Program

101 Centralized Biological
Laboratory
Pennsylvania State University
University Park, PA 16802

(814) 865-1495
Fax: (814) 865-3685



The Animal Resource Program (ARP) is committed to providing PSU research personnel with high quality animal care services and facilities, to facilitate and improve animal research, and to ensure the health, well-being and humane treatment of all animals at PSU. ARP provides veterinary and diagnostic services, personnel training and expertise in laboratory animal, agricultural and wildlife technology and medicine. ARP veterinarians have specialized training and are available to assist with animal model development, experimental design, budget projections and grant preparation. Participation in collaborative research projects is welcomed.

The next Mouse Biomethodology Seminar will be held
on September 21, 2007 from 1-4 pm
in the Centralized Biological Laboratory.
Please call 865-1495 to register to attend.